

BSMART Foundation

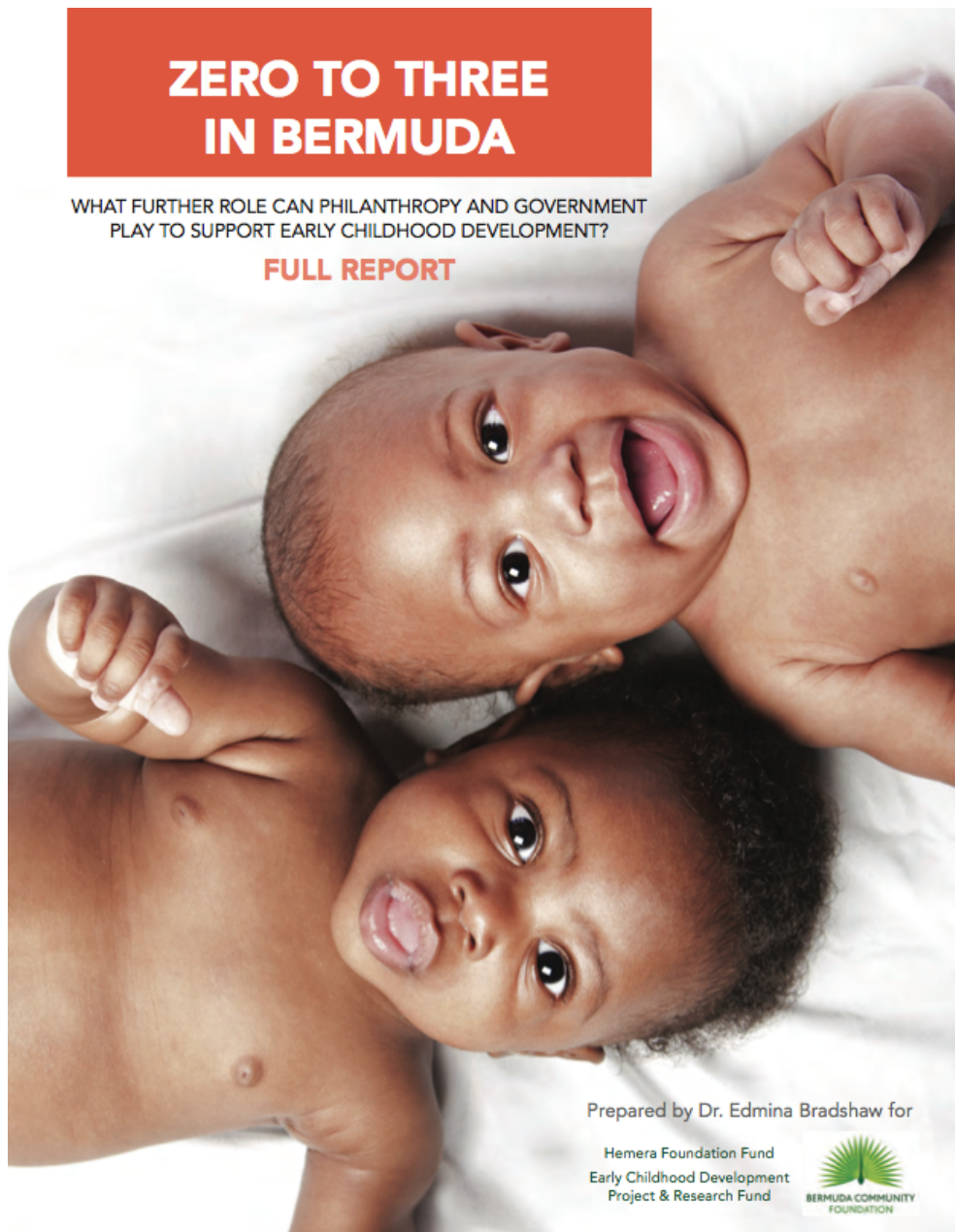


Zero to Three in Bermuda Report

(excerpts)

Sept. 2015

The Hemera Foundation would like to thank BSMART Foundation for contributing your input and perspectives towards the development of the 2014 report: Zero to Three in Bermuda. This report was undertaken to help understand better the Early Childhood Development issues from a Bermuda community perspective. It was commissioned by the Hemera Foundation working through the Bermuda Community Foundation.



ZERO TO THREE IN BERMUDA

WHAT FURTHER ROLE CAN PHILANTHROPY AND GOVERNMENT
PLAY TO SUPPORT EARLY CHILDHOOD DEVELOPMENT?

FULL REPORT

Prepared by Dr. Edmina Bradshaw for

Hemera Foundation Fund
Early Childhood Development
Project & Research Fund



5. STAKEHOLDERS

Stakeholder Map

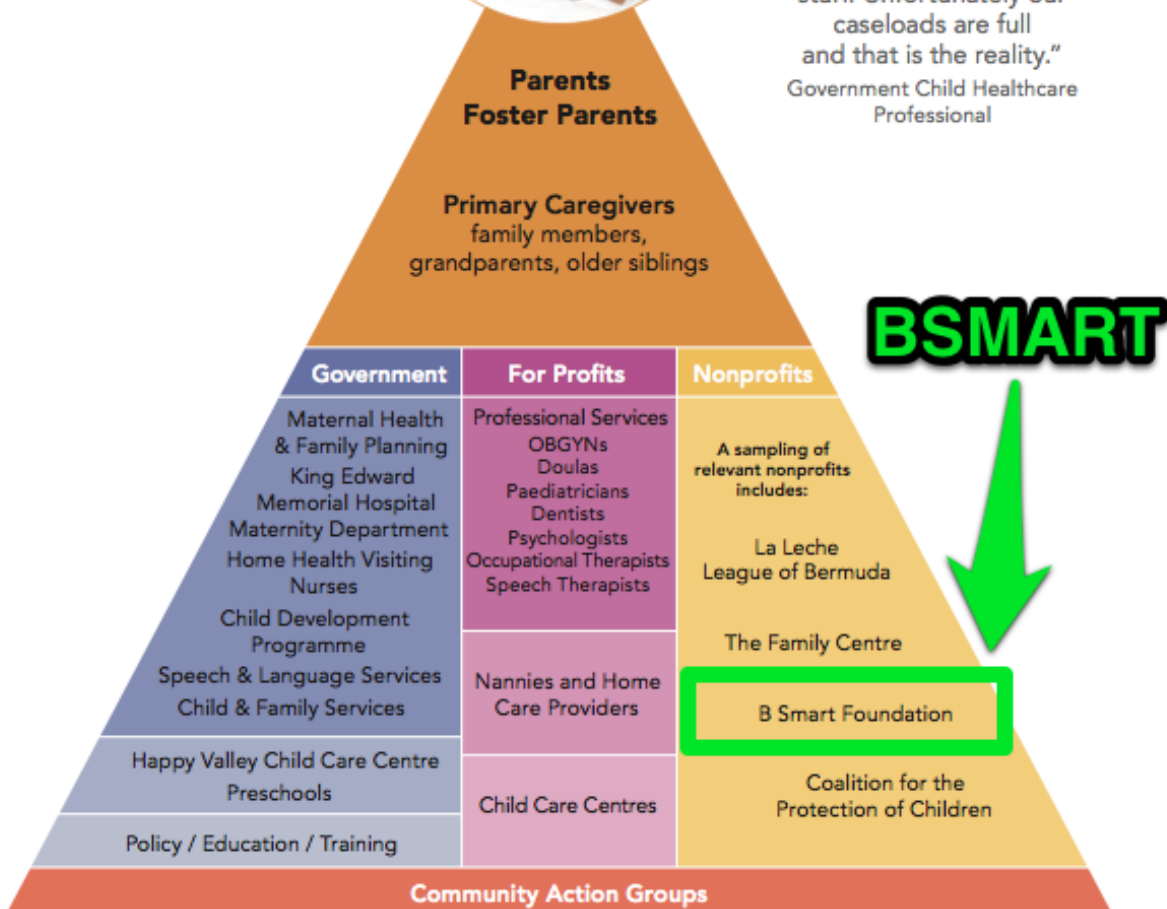
The following is an illustration of various stakeholders responsible for the zero to three population in Bermuda. The map is not intended to be an exhaustive portrayal, but a representation of those having direct interest and concern in the well-being of babies and toddlers as a core element of their activities.

“Government delivers Human Services through a number of mechanisms, many of which operate in separate Ministries or Departments. This creates a fragmented approach such that one family or individual can be seen by multiple caseworkers.”
Sage Commission Report, 2013



“Everyone has individual boxes... We need to move more towards concentric circles.”
Healthcare Professional

“We seem to be looking for increased outcomes with decreased staff. Unfortunately our caseloads are full and that is the reality.”
Government Child Healthcare Professional



PROGRAMMES & SERVICES

BSMART Foundation

As part of a general programme for children based on brain research, BSMART Development Foundation offers a fee for service neurodevelopmental programme to help parents maximize the critical periods of brain development during the first years of life. The programme includes senses & perception, movement, reflexes, language and sequential milestone development.

20 ZERO TO THREE IN BERMUDA

8. BRIGHT SPOTS

A Sampling of Bright Spots

The following are some of the organizations that stand out for their ECD programmes and services in Bermuda. They are identified as bright spots because:

- » Their programmes incorporate theory-based approaches to learning
- » They have demonstrated proven effectiveness
- » Measurement and monitoring of impact is an important programme component
- » They have developed sustainable standards
- » They are outcomes-driven

"The continuity of children's experiences across different environments is greatly enhanced when providers co-operate with parents and communities to adopt consistent approaches to child development and learning."

Quality Matters in Early Childhood Education and Care



BSMART Foundation

- » Theory based services via affiliation with Minnesota Learning Research Center
- » Arts-rich environment
- » Incorporating infant programming
- » Recently (Feb 2014) expanded from 1,750 sq ft to a new 4,500 sq ft facility
- » Strong measurement practice - diligent with pre/post data collection
- » Founder has been invested in brain centered approaches to ECD for over 10 years and has had formal training with the Minnesota Learning Resource Center
- » Provides neuropsychological assessments

GAPS IN THE FIELD

Access to affordable high quality programmes & services

The census data² bears out the fact that household income impacts the quality of care parents can afford. At more than \$1,000 a month in some instances, high quality daycare is outside the financial reach of many households. Even the 'designer' programmes that operate as nonprofits charge a fee-for-service to cover the high teacher- to-student ratios necessary for the quality of service they provide.

Some parents accept that the caregiving service they use may have inadequate quality programmes but is simply what they can afford so their children are safe while they work.

A related issue to affordability of high quality care is the need for extended hours for caregiver services for parents who work outside of normal working hours.

For these parents, they are often forced to resort to leaving babies and toddlers in the care of family members like older siblings or grandparents, or even, friends and acquaintances.

The following quote from a parent acknowledged their challenge in accessing affordable daycare as:

"I know my kids probably watch TV all day long, but I cannot afford those daycares that have activities for the children. Those are for people with money" Professional mother from a two- parent household.

26 ZERO TO THREE IN BERMUDA

10. OPPORTUNITIES & RECOMMENDATIONS

The purpose of this report has been to understand the ECD landscape in Bermuda with a view to being able to explore appropriate and focused social investments in the field.

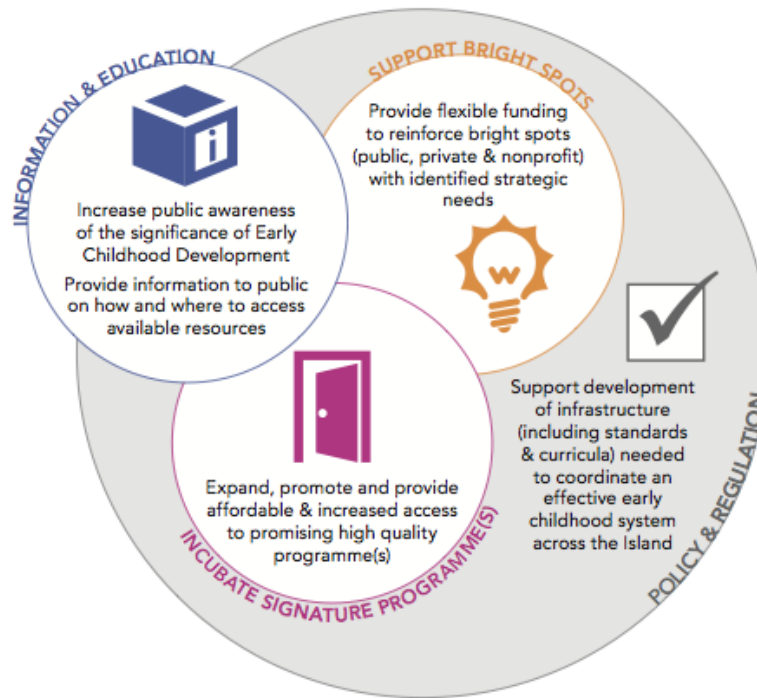
To this end, outside of existing public programmes and services, opportunities for philanthropic and other funding have been identified in FOUR priority areas, illustrated below, to deliver strong and sustainable gains in ECD.

Each recommended priority area is structured as an opportunity to:

- » *Make measurable impact and address gaps in the field*
- » *Identify and reinforce successful community partners making a positive impact, whether they are professionals or dedicated volunteers*
- » *Support innovative solutions*

- » Engage the public, public officials, and business and community leaders
- » Allow flexibility for focused or pooled philanthropic funding

Illustration: Opportunities & Recommendations for Philanthropic Funding



11. REFERENCES & APPENDICES

Allison Figuerido

Bsmart

Owner

Report prepared by:

**Dr. Edmina Bradshaw, for the Hemera Foundation and Early Childhood
Development Funds at the Bermuda Community Foundation**

Excerpts of this report are available as follows:

Executive Summary Key Findings Opportunities & Recommendations Full Report

For further details, please refer to:

www.bermudacommunityfoundation.org or

www.bermudamatters.org/index.php/civil-society-e-library